

Arc



Autumn
AC 500



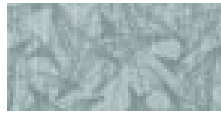
Dragonfly
AC 501



Flora
AC 502



Lagoon
AC 503



Lakeside
AC 504



Nightingale
AC 505



Phoenix
AC 506



Silver Screen
AC 507



Sunglow
AC 508



White Pine
AC 509

Aristo

Pattern Style: Railroaded



Baked Pottery
AO 800



Gold Mine
AO 801



Heat Wave
AO 802



High Seas
AO 803



Laurel
AO 804



Nirvana
AO 805



Sangria
AO 806



Silhouette
AO 807



Sisal
AO 808



Tiger Eye
AO 809



Vapor
AO 810



White Water
AO 811

Flair



Adobe
FA 300



Blue Ribbon
FA 301



Cashmere
FA 302



Dusk
FA 303



Golden Poppy
FA 304



Malachite
FA 305



Melody
FA 306



Mineral
FA 307

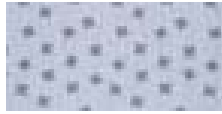


Red Dawn
FA 308

Luxe



Dapple
LU 600



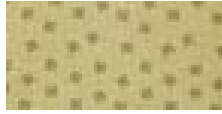
Fleck
LU 601



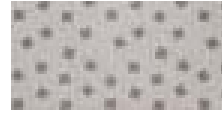
Garnet
LU 602



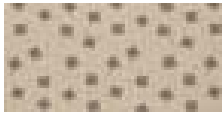
Heaven
LU 603



Lilly Pad
LU 604



Mercury
LU 605



Morsel
LU 606



Sorrel
LU 607



Starlight
LU 608

Surge

Pattern Style: Railroaded



Avenue
SG 700



Bombay
SG 701



Caramel
SG 702



Casino
SG 703



Film Strip
SG 704



Nile
SG 705



Reservoir
SG 706



Resort
SG 707



Waterfall
SG 708

Verve



Cafe
VE 400



Chrome
VE 401



Glacier
VE 402



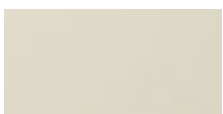
Honey
VE 403



Jet Set
VE 404



Keylime
VE 405



Mist
VE 406



Nectarine
VE 407



Polished Metal
VE 408



Reflection
VE 409



Ruby Slippers
VE 410

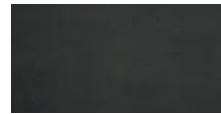
Vitality



Apricot
VT 200



Armada
VT 201



Black Velvet
VT 202



Blond
VT 203



Crushed Plum
VT 204



Daybreak
VT 205



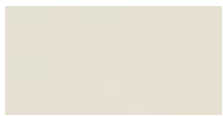
Hershey
VT 206



Hot Spring
VT 207



Iced Coffee
VT 208



Mohair
VT 209



Old Glory
VT 210



Park
VT 211



Parrot
VT 212



Red Carpet
VT 213



Red Velvet
VT 214



Robyn Egg
VT 215



Sienna
VT 216



Slate
VT 217



Sterling
VT 218



Straw
VT 219



Suburb
VT 220



Tungsten
VT 221



Vanilla
VT 222



Willow
VT 223

MorCare Capabilities:

MorCare™ Vinyl Properties and Characteristics:

MorCare™ has been developed to meet the increased demands of hospital, contract and institutional use.

Chemical Resistance:

MorCare™ offers enhanced resistance to most of the common chemicals used for sterilization and cleaning in medical environments. MorCare™ will resist, without serious discoloration, the repeated action of normal dilutions of chlorine bleaches, ammonia based cleaners, excluding Quaternary Ammonium Compounds and Phenolics, as well as many common oxidizing and reducing chemicals.

Bacterial Resistance:

MorCare™ protected products contain both antibacterial and antimicrobial agents that will provide resistance against the following bacteria when tested using the AATCC method 147-2004: Staphylococcus Aureus, Klebsiella Pneumoniae.

Durability:

MorCare™ protected vinyl will keep and maintain its new appearance under heavy duty use; far longer than normal vinyl upholstery materials. It will withstand 500,000 double cycles using the Wyzenbeek #8 cotton duck test method. MorCare™ offers high resistance to normal scrapes and scuffing.

Cleanability:

With time, it is easier to clean freshly soiled vinyl. This is achieved by prompt energetic washing using a mild soap solution. Previously soiled areas, where soiling has not penetrated the vinyl surface, can be washed and scrubbed with a sponge or soft brush using a mild non-abrasive cleaner.

Specifications:

Standard Weight: 32 oz/linear yd.

Nominal Total Thickness: 0.040 in.

Finished Width: 54 in.

Roll Length: 30 yd.

Sulfide Stain Resistant

Urine Stain Resistant

Mildew & Bacteria (Staph) Resistant

Enhanced Bleach Resistant

100% Polyester Loop Knit Backing

Anti-Static Slip Finish

Oil Resistant

Abrasion Resistant: No significant wear after 500,000 double rubs with #8 cotton duck using the Wyzenbeek test method

Flame Resistance:

Port Authorities of New York and New Jersey

CID-A-A-2950-A (Formerly CCC-A-680a)

Federal Standard 191A Test Method 5903.1

Federal Specification CCC-A-700J

FAA Regulation 25.853 (a) and Appendix F, Part I (a) (1) (ii)

FMVSS 302

California Flammability Regulation (Bulletin 117, Section E)

BIFMA (No F) Class A

UFAC Class 1

*This term and all corresponding data refer to typical performance in the specific test indicated and should not be construed to imply the behavior of this or any other material under actual fire conditions.