

# LDI - CALIFORNIA COLLECTION



COLOR NAME: 944  
JAMAICA



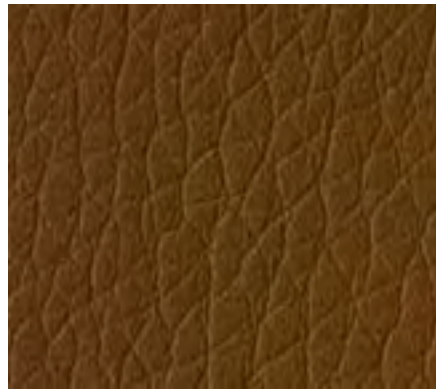
COLOR NAME: 924  
OLIVE



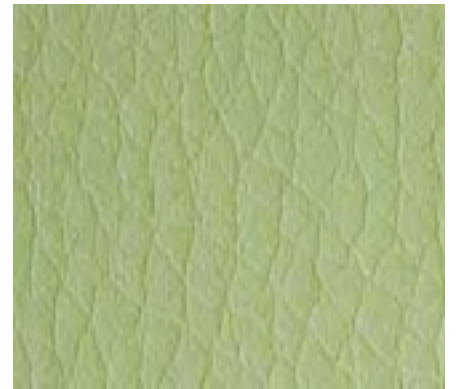
COLOR NAME: 925  
BUTTERCUP



COLOR NAME: 932  
ADOBE



COLOR NAME: 938  
BARK



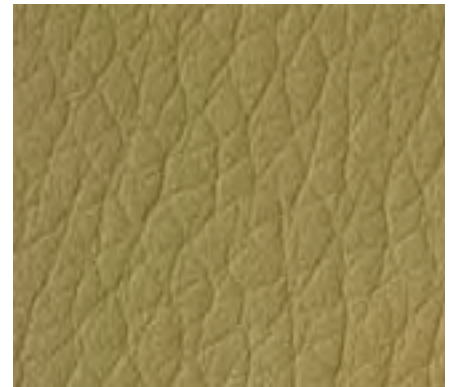
COLOR NAME: 923  
CRABAPPLE



COLOR NAME: 926  
DAYBREAK



COLOR NAME: 930  
PUMPKIN



COLOR NAME: 937  
SMOKEWOOD



COLOR NAME: 922  
PEAR



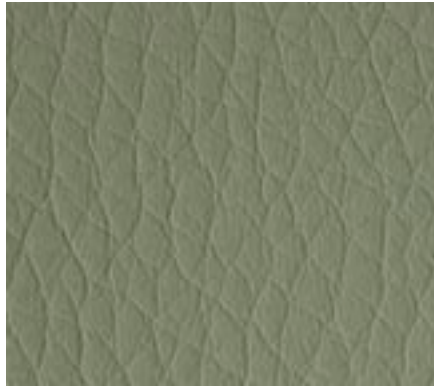
COLOR NAME: 927  
AUTUMN



COLOR NAME: 928  
WHEAT



COLOR NAME: 931  
DESERT



COLOR NAME: 940  
FLAGSTONE



COLOR NAME: 943  
TURQUOISE



COLOR NAME: 921  
MEADOW MIST



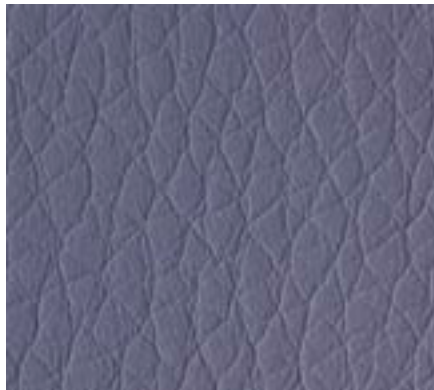
COLOR NAME: 920  
PINEAPPLE



COLOR NAME: 935  
CACTUS



COLOR NAME: 939  
MISTY GRAY



COLOR NAME: 956  
GRAPEVINE



COLOR NAME: 945  
BERMUDA



COLOR NAME: 948  
SHERWOOD



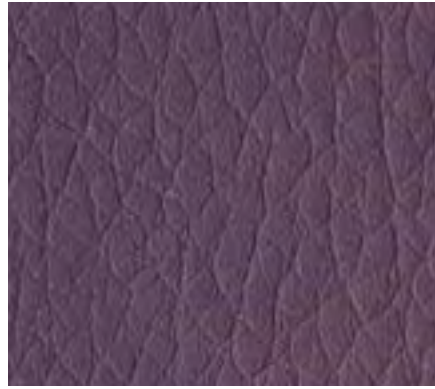
COLOR NAME: 941  
CAMEL



COLOR NAME: 933  
TUCSON



COLOR NAME: 946  
MUSHROOM



COLOR NAME: 961  
PLUM



COLOR NAME: 947  
LAGOON



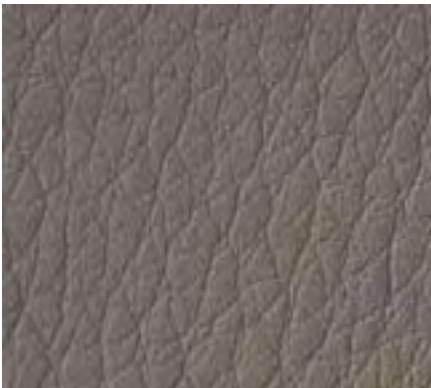
COLOR NAME: 949  
GRASSHOPPER



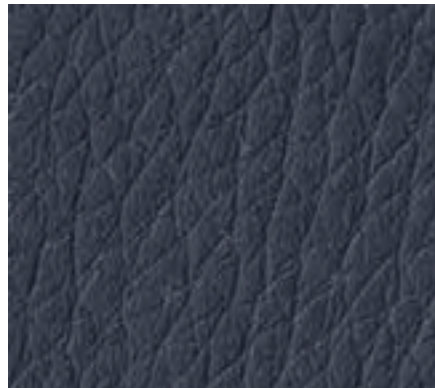
COLOR NAME: 929  
TOASTED ALMOND



COLOR NAME: 934  
BEET



COLOR NAME: 942  
PEWTER



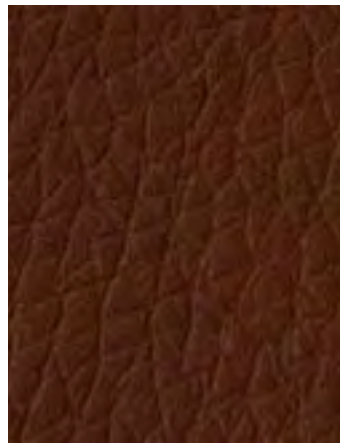
COLOR NAME: 936  
NAVY



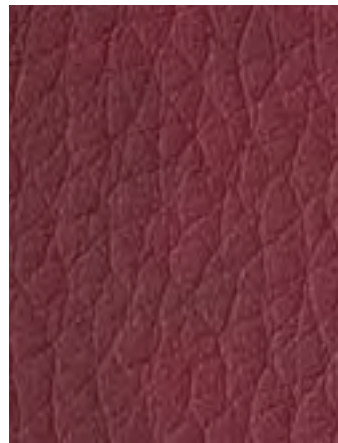
COLOR NAME: 952  
JUNIPER



COLOR NAME: 950  
FIR



COLOR NAME: 960  
STORM



COLOR NAME: 959  
WINE



COLOR NAME: 951  
BLACK

## Typical Physical Properties

TEST	UNITS	METHOD	RESULTS
Width	Inches (cm)	ASTM D-1776	54 (137)
Thickness	Inches (mm)	ASTM D-1776	0.043 (1.1)
Weight	O/yd2 (g/m2)	ASTM D-3776	14.0 (475)
Tensile Strength	psi	ASTM D-1117	100 X 60
Trap Tear Strength	psi	ASTM D-1117	12 X 11
Elongation	%	ASTM D-1776	22 X 26
Abrasion #10 Duck Cloth Wire Screen	Double Rubs Double Rubs	Wyzenbeek ASTM D-3597 ASTM D-4157	200,000 + 200,000 +
Crocking	AATCC scale	AATCC-8	5 dry 5 wet (water) 5 wet (alcohol)
Taber Abrasion CS-10, 1000g	Cycles	GM2726M ASTM D-3884	1000 cycles No change
Flammability		UFAC	CLASS 1
		NFPA 260-A	CLASS 1
		CAL. 117 Section E	Pass
		ASTM E-84	Pass
Colorfastness	Light	AATCC-16A	Class 5
Emissions		California 01350	Pass

## Content

- ◆ 60% TPE, 26% Polyester, 14% Cotton
- ◆ Approximately 12% recycled content

## EnviroLeather™ Cleaning Instructions

EnviroLeather™ has a superior, stain resistant, durable finish. It is designed for easy care and cleaning. The high-tech polymer finish also provides excellent chemical resistance.

### ORDINARY STAINS

Remove ordinary dirt, dust, smudges, and most spills by simply wiping with a damp cloth.

### WATER SOLUBLE STAINS

For water soluble stains such as coffee, mustard, juice, wine, etc., remove with soap and water.

### STUBBORN STAINS

For more stubborn stains such as ink, grease, shoe polish, etc., remove with mild solvent such as mineral spirits or rubbing alcohol.

### DISINFECT

Disinfect with 20 percent bleach solution.

### CLEANING CODE

S/W

## EnviroLeather™ Features

### ENVIRONMENTAL BENEFITS

- ◆ Low VOC emissions, passes CAL 01350
- ◆ PVC-free, Chlorine-free (no vinyl)
- ◆ Bromine-free, no Halogenated flame retardants
- ◆ Plasticizer-free
- ◆ Recycled and renewable content
- ◆ No heavy metals
- ◆ No Azo dyestuffs
- ◆ Animal friendly

### PERFORMANCE ADVANTAGES

- ◆ Outstanding abrasion resistance and durability
- ◆ Superior chemical resistance
- ◆ Designed for comfort
- ◆ Impervious to fluids
- ◆ Superior seam, puncture and tear strength
- ◆ Stain resistant, cleanable

### UPHOLSTERING

- ◆ Very easy to tailor and upholster
- ◆ Consistent manufacturing properties
- ◆ Balanced stretch, excellent recovery
- ◆ Resists wrinkling, "puddling", and sagging in field use
- ◆ Resists moisture absorption, resulting in consistent size of cut patterns
- ◆ Makes tight seams and holds its shape for a tailored look

**IOA**  
healthcare  
furniture

829 Blair Street  
Thomasville, NC 27360  
Phone 336/475-7106  
Fax 336/476-3016  
www.ioa-hcf.com

**LDI**  
ENVIRONMENTAL AND SAFETY SOLUTIONS

**LDI Corporation**  
3560 Lafayette Rd.  
Building 2, Suite C  
Portsmouth, NH 03801  
Toll Free (866) 332-0700  
Fax: (603) 436-1777

www.LDIolutions.com